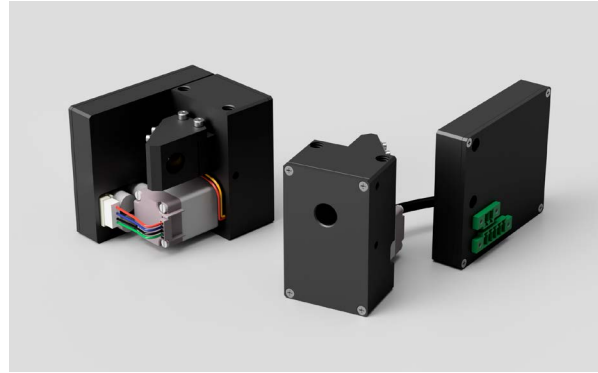


## OEM laser power attenuator LPA-OEM



OEM Laser power attenuator (LPA-OEM) is a compact, cost-effective motorised laser power control unit designed for integration. The LPA-OEM is produced in the UV, visible and NIR spectral ranges, from 250 nm to 2000 nm. This device is combined with the unique mechanical

design which ensures repeatability and high stability of performance. All optical components of the LPA are made for high LIDT and provide stable and reliable performance even using them with high power lasers in industrial applications.

**Main features**

- Compact, cost-effective design
- Detachable controller for better integration
- 175,543  $\mu$ steps in full rotation
- $\pm 10$   $\mu$ steps accuracy ( $\pm 0,02$  deg, less than  $\pm 0,05$  % of laser power)
- Fast adjustment - less than 0,2 sec (min to max)
- High damage threshold up to 10 J/cm<sup>2</sup> (10 ns @ 1064 nm)
- Adjustable polariser angle for highest contrast

**Application examples**

- Precise laser micromachining
- Laser power stabilization
- Research
- Laser integration

**Standard specifications**

| LASER POWER ATTENUATOR LPA-OEM SPECIFICATIONS |   |
|---|---|
| Input and output clear aperture               | ø8 mm   |
| Power attenuation range                       | <0,1% to >98%   |
| LIDT coating                                  | >10 [J/cm <sup>2</sup> ] (10 ns @ 1064 nm)  |
| Close to open time                            | <0,2 sec  |
| Resolution                                    | 175,543 $\mu$ steps in full rotation<br>21,943 $\mu$ steps in min/max rotation<br>(0,002 deg, 7,2 arcsec, 0,035 mrad) |
| Accuracy                                      | $\pm 10$ $\mu$ steps<br>( $\pm 0,02$ deg, less than $\pm 0,035$ %)  |
| Dimensions (H x W x L)                        | 58 x 36 x 57 mm LPA-OEM<br>58 x 50 x 67 mm LPA-OEM with beam controller<br>58 x 67 x 67 mm detached controller        |

\*Custom design available

**Standard products**

| MODEL   | ATTENUATION RANGE | LIDT (COATING)                         | DESIGN WAVELENGTH | SKU   | PRICE  |
|---------|-------------------|--|-------------------|-------|--------|
| LPA-OEM | 0,5 - 95%         | 2 J/cm <sup>2</sup> (10 ns @ 266 nm)   | 257 nm            | 20051 | 1190 € |
| LPA-OEM | 0,5 - 95%         | 2 J/cm <sup>2</sup> (10 ns @ 266 nm)   | 266 nm            | 20052 | 1190 € |
| LPA-OEM | 0,2 - 96 %        | 3 J/cm <sup>2</sup> (10 ns @ 355 nm)   | 343 nm            | 20053 | 1190 € |
| LPA-OEM | 0,2 - 96 %        | 3 J/cm <sup>2</sup> (10 ns @ 355 nm)   | 355 nm            | 20054 | 1190 € |
| LPA-OEM | 0,1 - 98 %        | 5 J/cm <sup>2</sup> (10 ns @ 532 nm)   | 515 nm            | 20055 | 1120 € |
| LPA-OEM | 0,1 - 98 %        | 5 J/cm <sup>2</sup> (10 ns @ 532 nm)   | 532 nm            | 20056 | 1120 € |
| LPA-OEM | 0,5 - 95 %        | 5 J/cm <sup>2</sup> (10 ns @ 532 nm)   | 515+1030 nm       | 20059 | 1280 € |
| LPA-OEM | 0,1 - 98 %        | 10 J/cm <sup>2</sup> (10 ns @ 1064 nm) | 1030 nm           | 20057 | 1120 € |
| LPA-OEM | 0,1 - 98 %        | 10 J/cm <sup>2</sup> (10 ns @ 1064 nm) | 1064 nm           | 20058 | 1120 € |